

# Rittal – The System.

Faster – better – everywhere.

## Digital Brochure

ENCLOSURES

POWER DISTRIBUTION

CLIMATE CONTROL

IT INFRASTRUCTURE

SOFTWARE & SERVICES

FRIEDHELM LOH GROUP

[www.rittal.ca](http://www.rittal.ca)



# Rittal – The System.

Faster – better – everywhere.



# System Accessories

## Base/Plinth

Flex-Block Base/Plinth System .....	424
TS Base/Plinth .....	426
Base/Plinth .....	433

## Base

Base .....	435
------------	-----

## Walls

Sidewalls .....	450
Partition Walls .....	453
Interconnect Kit .....	458

## Baying Systems

Baying .....	460
--------------	-----

## Doors/Locks

Door Models .....	467
Expansion Accessories for TS Modular Front Design .....	469
Viewing Windows/Operating Panels .....	473
Lock Systems .....	478
Hinges .....	492
Door, External/Internal .....	493

## Roof/Wall Mounting

Roof .....	499
Wall Mounting .....	503

## Interior Fittings

Mounting Plates .....	507
Rail Systems .....	514
Assembly Components .....	533
Component Shelves .....	540
System Lights .....	545
EMC .....	551
Interior Fittings for Areas at Risk of Earthquake .....	554
Grounding .....	555

## Cable Routing

Cable Entry .....	561
Flange Plates .....	564
Cable Gland .....	568
Cable Gland .....	569
Cable Management .....	572
Cable Routing 19" .....	582

## 19" Installation System

Pivoting Frame .....	587
Accessories for Data Rack .....	591
Profile Rails .....	592
Slide Rails .....	596
19" Fittings .....	598
Patch Panels .....	603
Splicing Boxes .....	604

## Human/Machine Interface

Handles .....	605
External Mounting Accessories .....	607
Front Fittings .....	608
Keyboards, Supports and Drawers .....	610
Interfaces .....	617
Signal Pillars .....	619

## Technical Information

RittalXpress .....	622
CE/Grounding/HD/Model Numbers .....	623
Protection Categories .....	624
NEMA .....	625
Approvals/Equipment Grounding Conductor .....	627
Coating/Spray Finish .....	628



## Handle set

### for Comfort Panel

Mounted on corner pieces, also suitable for retrofitting.

#### Material:

- Handle tube: Aluminum
- Handle holder: Die-cast zinc
- Covers: Polyamide

#### Surface finish:

- Handle tube: Natural anodized
- Handle holder: Powder-coated

#### Color:

- Handle holder: RAL 7024
- Covers: Similar to RAL 7024

#### Supply includes:

- Handle tube, Ø 20 mm
- 2 handle holders
- 2 covers
- Assembly components

#### For horizontal mounting

With front panel width	Packs of	Model No.
19" (482.6 mm)	1 set(s)	<b>6375.010</b>

#### Note:

- Shorter heights and widths can be achieved by cutting the handle tube to length
- For enclosures with 74 mm installation depth, cannot be mounted on the same side as the support arm connection



#### Accessories:

- Clipboard, see page 607
- Display board, see page 607



## Handle set

For vertical and horizontal mounting on all surfaces.

Total length: 420 mm

#### Material:

- Handle tube: Aluminum
- Tube holder: Die-cast zinc

#### Surface finish:

- Handle tube: Natural anodized

#### Color:

- Tube holder: RAL 7035

#### Supply includes:

- 4 tube holders
- 2 handle tubes

Packs of	Model No.
1 set(s)	<b>2389.000</b>



#### Accessories:

- Clipboard, see page 607
- Display board, see page 607



## TP aluminum strip

For retrofitting to

- TP three-piece/two-piece
- TP one-piece console
- All enclosures/covers with 20 mm folded edge height (plate thickness max. 2 mm)

Length: 1750 mm

(easily cut to length for other dimensions)

Sufficient for desk units and top pieces:

- 3 x width 600 mm
- 2 x width 800 mm
- 1 x width 1000 mm + 1 x width 600 mm
- 1 x width 1200 mm
- 1 x width 1600 mm

Length inches (mm)	Model No.
69 (1750)	<b>6731.120</b>

#### Material:

- Aluminum strip: Extruded aluminum section
- Cover caps: Plastic

#### Surface finish:

- Aluminum strip: Natural anodized

#### Color:

- Cover caps: RAL 7035

#### Supply includes:

- 1 aluminum section
- 6 plastic cover caps
- Drilling template
- Mounting accessories



# Handles

## Handles

For horizontal or vertical attachment to the housing panels of

- Comfort Panel
- Other housings or
- Surfaces

Mounting holes and a smooth surface are required for installation.

The surface can be milled for the Comfort Panel with ribbed surface, which can be selected using configurators on the Rittal web pages. In this case, please indicate "prepared for 6107.XXX handle set" for the command panel.

### Material:

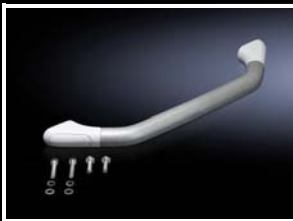
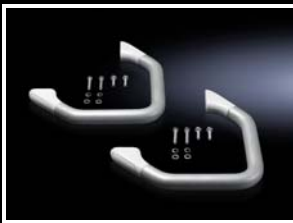
- Handle holder: Die-cast zinc
- Cover bungs: Plastic
- Handle tube: Aluminum

### Surface finish:

- Handle tube: Powder-coated

### Color:

- Handle holder: RAL 7035
- Cover bungs: Similar to RAL 7035
- Handle tube: Similar to RAL 9006

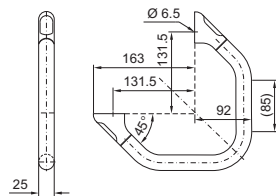


## Corner handle

### Supply includes:

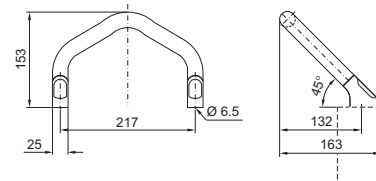
- 4 handle holders
- 2 handle tubes
- Assembly components

Mounted to corner of housing



Packs of	Model No.
1 set(s)	<b>6107.000</b>

Mounted on straight surface  
(Handle holder turned through 90°)



## U handle

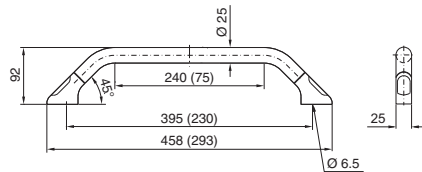
### Supply includes:

- 2 handle holders
- 1 handle holder
- Assembly components

For front panel dimensioning	Packs of	Model No.
≥ 7 U	1 set(s)	<b>6107.100</b>
19" (482.6 mm)	1 set(s)	<b>6107.200</b>

### + Accessories:

- For 6107.200: Clipboard, see page 607
- For 6107.200: Display board, see page 607



### Note:

- Dimensions in brackets for front dimensioning 7 U